

JACK

World No.1

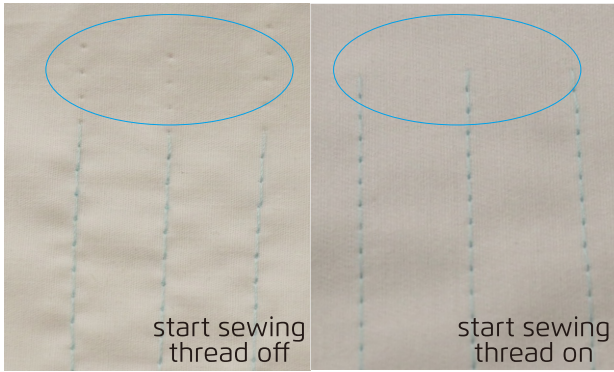
A4B

ANTI THREAD-OFF COMPUTERIZED LOCKSTITCH MACHINE



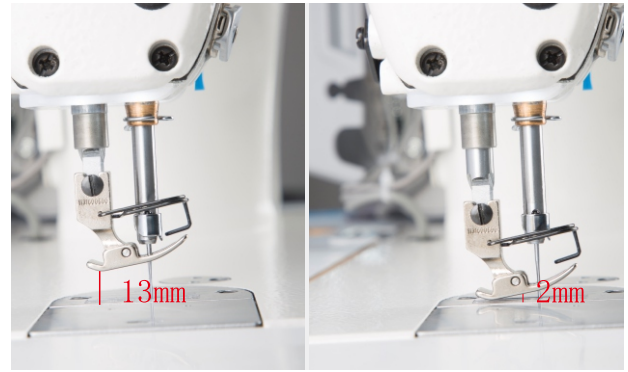
JACK TECHNOLOGY CO.,LTD

Jack Facebook



1 Bottom thread clamping to anti thread-off while starting sewing

Jack brand new patent for bottom thread clamping, effectively reduce the probability of thread-off while starting sewing



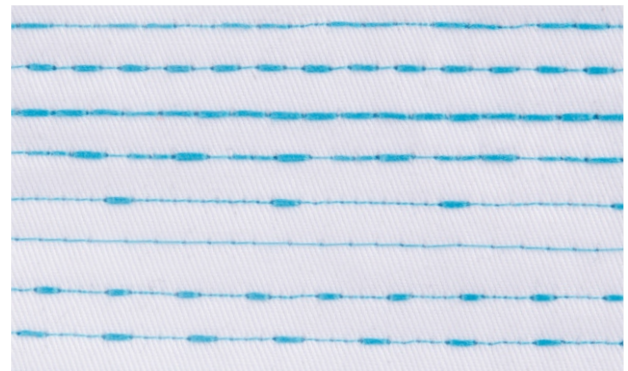
2 Stepping motor control, presser foot height adjustable

The height of the presser foot can be adjusted within the range of 0-13mm basing on the thickness of the fabric, saving time and convenience.



3 High precision stitch

stitch length can reach 0.1mm controlled by stepping motor. Stitch length adjustment function can be locked just in case operator's mis-operation.



4 Variable stitches, fashionable and beautiful

The height of the presser foot can be adjusted within the range of 0-13mm basing on the thickness of the fabric, saving time and convenience.

BUTTON INSTRUCTION

- Long press for 3 seconds to factory reset
- Start tack sewing mode
Short press, include start tack, double start bartack, off.
- End tack sewing mode
Long press, include back tack, double start tack, off.
- Pattern sewing mode
Press to change the pattern sewing mode and edit the pattern
- Eshort press, enter W bar-tacking
Long press, enter constant stitch sewing
- Short press, electronic thread tension on
Long press, One-shot Sewing on
- Short press, free sewing on
Long press, auto trimmer on
- Stitch length adjustment, press + - to adjust
- Presser foot height adjustment
Press + - to adjust
- Short press presser foot up after trimming; presser foot up after auto trimming, convenient for collecting fabric
Long press presser foot up when sewing stop; presser foot up when stop sewing, easy to make corner stitches

Technical Parameters

Model	Needle	Thread Number	Stitch Length (mm)	Foot height (mm)	Max. speed (S.p.m)	Light Material	Mid-Heavy Material	Heavy Material	Volume (mm)	Weight (kg)
A4B-A-C	DB×1 11-18#	2	5	5-13	5000	√	√		690×295×550	40/46
A4B-A-CH-M	DB×1 11-18#	2	5	5-13	5000	√	√		690×295×550	40/46
A4B-A-C-7	DB×1 11-18#	2	7	5-13	3500	√	√		690×295×550	40/46
A4B-A-CH	DP×5 18-21#	2	5	5-13	4500			√	690×295×550	40/46
A4B-A-CH-7	DP×5 18-21#	2	7	5-13	4500			√	690×295×550	40/46
A4B-A-CHL-7	Dp×5 18-21#	2	7	5-13	3500			√	690×295×550	40/46