

ADV-6000



- Size (Main body) W475mm x D186mm x H300mm
- Weight (Main body) 8.8kg

Standard



Wide extension table
Wider space makes sewing for large works easily such as curtains and quilts.



Foot controller
Easy start and stop operation with your foot.



Hard case
Hard case protects the machine from the dust.

Other features

Full automatic buttonhole	Just set the button on the buttonhole foot, the buttonhole is completed automatically.
Notification lamp	Ready when the red light turns green, you can start sewing pressing the button.
Lock presser foot	Keep presser foot horizontally with a simple button operation, easy to sew even thick material.
Auto tack button	Tack stitch function without puckering.
Smart accessory box	A convenient box store accessories inside the table.
Needle up-down button	The needle moves up and down by the button, convenient for square stitch and single stitch.
One-touch slow button	Slower the sewing speed instantly.
Drop feed	Lower the feed dog with a lever, moving the fabric freely, ideal for free motion quilting.
LED lighting for sewing space	Bright LED illuminates working space.
Free arm	Sew tubular items like sleeves, trousers, etc. Simply remove the detachable accessory box to access the free arm.
Thread sensor	If the upper thread breaks or is incorrectly threaded, the sensor will automatically stop the machine.
Embroidery unit	Embroidery unit is available as an option.

Option

Optional embroidery unit

EU-5

Connect optional embroidery unit to enhance your works



imagination to creation

ADV-6000



Manufactured by:

HappyJapan

HappyJapan Inc.

TOKYO OFFICE 2-9-5,Taito,Taito-ku,Tokyo, Japan

TEL: +81-3-3834-0711 FAX: +81-3-3835-8917

E-mail: sew-info@happyjpn.com

https://www.happyjpn.com/en/product/sewing



Distributed by:

GOVIC COMPANY d.o.o. | Franje Račkog 10 | 51000 RIJEKA | CROATIA

www.govic-company.hr

info@govic-company.hr

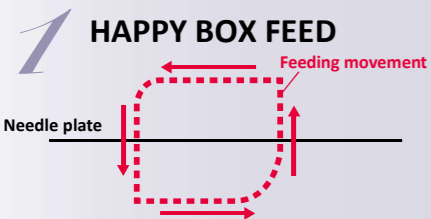
HappyJapan

Comfortable sewing and easy use with innovative features.

ADV-6000 makes your sewing life happier.



New 3 New "FEEDING" features



1 HAPPY BOX FEED

Ideal sewing function for thick, thin and elastic fabrics. By horizontal movement of the feed dog, the feed dog contacts fabrics longer time than current models, feeding thin or stretchable fabrics smoothly.



2 ZIGZAG FOOT (standard foot)

Eliminate skipping stitches. Newly Improved zigzag foot feeds the fabrics firmly. Wide movement of zigzag foot allows to sew thick fabrics without skipping stitch.



3 7 PIECE FEED DOG

Reducing puckering of thin fabric. 7 piece feed dog reduces slipping and puckering.

Key features

Happy one step needle threader



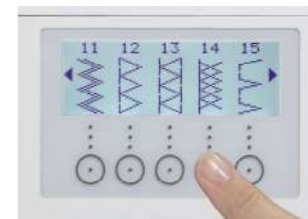
Thread up to the guide and lower the lever, get the thread through the eye of the needle. An excellent feature operated with one hand action. (* For household sewing machine needles 11 to 16)

Quick change needle plate



Easy replacing the zigzag needle plate to straight needle plate.

LCD touch screen



Simple LCD screen for easy pattern selection.

Wide sewing space



Sewing space is 200mm. Wide sewing space make it easy to handle large fabrics.



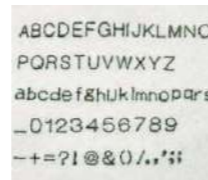
Foot pressure adjustment

The pressure of the presser foot can be adjusted from 5 levels according to the thickness of the fabric.



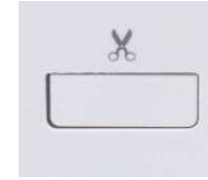
Computerized automatic thread tension

Adjust appropriate thread tension according to the pattern.



Lettering stitch

Alphabets, letters, and your favorite patterns can be combined.



Automatic thread cutter

Upper and bobbin thread are cut short automatically.



Presser foot lifter

Easy to lift up and down presser foot.



New threading system

Just thread in numerical order regardless of needle position.



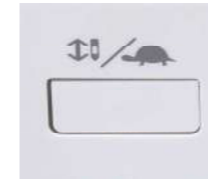
Easy bobbin threading

Just insert bobbin and follow the guide, it allows you to start sewing without pulling up bobbin thread.



Easy bobbin winding

To set up the bobbin for winding, simply insert the bobbin to the shaft, wind the thread. The motor automatically stops when winding finish.



One touch slow button

Slower the sewing speed instantly.



Silent design

Comfortable sewing without noise.



Knee lifter

Raise / lower the presser foot.

Stitch pattern List (Total 192 types)

1	2	3	4	5	6	7	8	9	10	11	12	13	14	15	16	17	18	19	20	21	22	23	24	25	26	27	28	29	30	31	32	33	34	35	36	37	38	39	40	41	42	43	44	45	46	47	48	49	50	51	52	53	54	55	56	57	58	59	60	61	62	63	64	65	66	67	68	69	70	71	72	73	74	75	76	77	78	79	80	81	82	83	84	85	86	87	88	89	90	91	92	93	94	95	96	97	98	99	100	101	102	103	104	105	106	107	108	109	110	111	112	113	114	115	116	117	118	119	120	121	122	123	124	125	126	127	128	129	130	131	132	133	134	135	136	137	138	139	140	141	142	143	144	145	146	147	148	149	150	151	152	153	154	155	156	157	158	159	160	161	162	163	164	165	166	167	168	169	170	171	172	173	174	175	176	177	178	179	180	181	182	183	184	185	186	187	188	189	190	191	192
---	---	---	---	---	---	---	---	---	----	----	----	----	----	----	----	----	----	----	----	----	----	----	----	----	----	----	----	----	----	----	----	----	----	----	----	----	----	----	----	----	----	----	----	----	----	----	----	----	----	----	----	----	----	----	----	----	----	----	----	----	----	----	----	----	----	----	----	----	----	----	----	----	----	----	----	----	----	----	----	----	----	----	----	----	----	----	----	----	----	----	----	----	----	----	----	----	----	----	-----	-----	-----	-----	-----	-----	-----	-----	-----	-----	-----	-----	-----	-----	-----	-----	-----	-----	-----	-----	-----	-----	-----	-----	-----	-----	-----	-----	-----	-----	-----	-----	-----	-----	-----	-----	-----	-----	-----	-----	-----	-----	-----	-----	-----	-----	-----	-----	-----	-----	-----	-----	-----	-----	-----	-----	-----	-----	-----	-----	-----	-----	-----	-----	-----	-----	-----	-----	-----	-----	-----	-----	-----	-----	-----	-----	-----	-----	-----	-----	-----	-----	-----	-----	-----	-----	-----	-----	-----	-----	-----	-----	-----