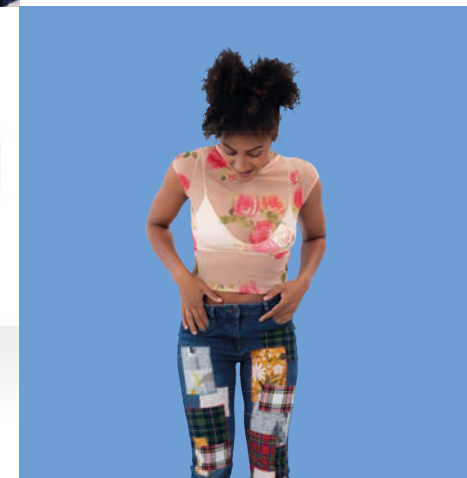
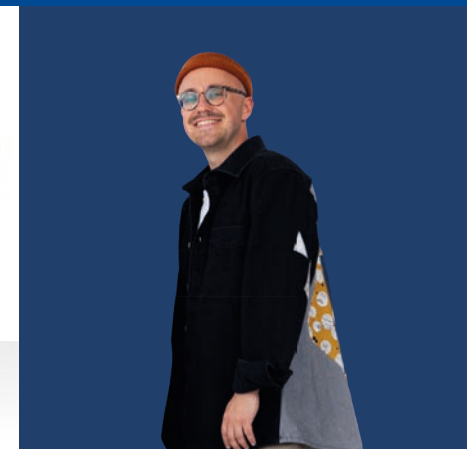

Smart sewing, made simple

Wherever you are in your sewing
journey, the **Innov-is A-Series** has
you covered



Welcome to the family

Whether you're an absolute beginner or a seasoned sewist, we know you're looking for a machine that is as reliable as it is flexible, with the scope to upgrade your skills whenever you want.

That's why we've designed the A-Series, just for you. A family of modern machines packed full of powerful features that let you take on any project, whatever your sewing style.



The starter



Innov-is A16

New to sewing, or simply looking for a machine that's easy to use? The Innov-is A16 is the perfect choice to advance your skills from beginner to expert.

The jog dial makes selecting stitches quick and simple. With a one touch needle threader and quick set bobbin you'll be ready to sew in seconds. Easy to use? Absolutely. Fewer features as a result? Absolutely not.

A16 key Features:

- 16 stitches, incl. 3 buttonholes
- Advanced one action needle threader
- Lockstitch button
- Quick set bobbin
- Needle stop position (up/down)
- Stitch length and width control
- Start/Stop button
- Slide speed control
- Soft cover



The upcycler



Innov-is A50

A50 key Features:

- 50 stitches, incl. 5 buttonholes
- Advanced one action needle threader
- Lockstitch button
- Quick set bobbin
- Needle stop position (up/down)
- Stitch length and width control
- Start/Stop button
- Slide speed control
- Twin needle setting
- Soft cover



Want to take your sewing to the next level? The Innov-is A50 is the perfect match for you.

With 50 built-in utility and decorative stitches you can express your creativity across a range of projects, from fashion to quilting. Its simple touch-button controls, electronic jog dial and large LCD display ensure precise results every time.



The creative one



Innov-is A65

A65 key Features:

- 60 Stitches, incl. 6 buttonholes
- Advanced one action needle threader
- Lockstitch button
- Quick set bobbin
- Needle stop position (up/down)
- Stitch length and width control
- Start/Stop button
- Slide speed control
- Twin needle setting
- Auto thread cutter
- Hard case



Unlock your creative potential and hit the ground running with the Innov-is A65.

Lightweight, with a hard case, it gives you the freedom to sew when, how and wherever you want. This versatile sewing machine is packed full of features that make it the ideal companion for all types of practical and creative sewing.



The designer



Innov-is A150

The Innov-is A150 has been designed to last a lifetime of sewing, providing everything you need as you expand your creative sewing expertise.

Personalise your makes with 150 decorative and 4 lettering stitches. Create professional level monograms and labels. Combine, mirror or repeat stitches to create your own unique stitch patterns. Bursting with features the Innov-is A150 cuts the hassle and opens up a world of creative possibilities.

A150 key Features:

- 150 stitches, incl. 10 buttonholes plus 4 lettering fonts
- Electronic keypad
- Advanced one action needle threader
- Lockstitch button
- Quick set bobbin
- Needle stop position (up/down)
- Needle position setting (middle/left)
- Presser foot/needle exchange key
- Stitch length and width control
- Start /Stop button
- Slide speed control
- Auto thread cutter
- Stitch combinations
- Hard case



Big features = fuss free sewing

We understand that you want a sewing machine that's ready to use as quickly as possible. When you have a great idea, you just want to get going. That's why we designed the Innov-is A series to be simple to set up and easy to use.

Advanced needle threader

Set-up is so easy with Brother's 'one-action' needle threader.

Lockstitch

Tie stitches off at the touch of a button.

Quick set bobbin

Simply drop in the bobbin, thread it following the arrow, and you're ready to sew.

Easy-to-use controls

Handy central controls help make sewing simpler. Intuitive jog dials and electronic touchpad provide fingertip control.

Start/Stop button

Use the machine with or without the foot controller.

Speed slide control

Instantly adjust your sewing speed.

Fast bobbin winder

Makes winding bobbins quick and easy.

Snap on presser feet

Quickly and easily change your presser feet whatever you're making.

Automatic reverse stitch

Automatically work neat, professional stitches at the beginning and end of every seam.



Four models, one commitment to quality

With a longer J-foot, sharpened feed dogs and a fixed needle bar, you'll enjoy smooth, strong and even feeding on all types of fabric, from thick denim and stretchy jersey, to delicate tulle. Lightweight and compact, A series machines make the perfect travel companion – the A65 and A150's hard cases protect from scratches and bumps.

One-step buttonholes

Work perfectly uniform buttonholes with one single action.

7-point feed

Extra feed dogs ensure a smooth feed and superior stitch quality, whatever the fabric.

Drop feed

Feed dogs are easily lowered for free motion or free hand sewing.

Free arm

Easily work a variety of awkward items including sleeves, trouser legs, and more.

Upper thread tension adjustment

Achieve the best possible stitch quality across different fabrics by adjusting the tension of the upper thread.

Needle stop position (up/down)

Keep control and pivot by selecting whether the needle stays up or down when your machine stops.

High strength

Extra powerful needle penetration for thicker fabrics like denim.

LCD screen

Keep track of your project with an easy-to-read LCD screen.

LCD error notice

An error message on the screen alerts to any incorrect setting.

LED sewing light

Illuminate your makes with the A-Series' bright but gentle LED light.

Accessory compartment

Stow away all your machine accessories in the in-built caddy.

Thread cutter – A65 and A150 only

Automatically trims threads at the end of sewing for ultra-neat results.



Special A150 features

Stitch versatility

Mirror, repeat, or combine stitches and see a preview on-screen before sewing.

More choice

Pick from 150 utility and decorative stitches, plus 4 lettering fonts.

Electronic keypad

Create your own stitch combinations using the easy-to-use electronic keypad and large LCD screen.

Needle position setting (middle/left)

Move the needle position for more versatile sewing.

Presser foot/needle exchange key

Stay safe and lock your machine from operating when changing your needle, presser foot etc.

Choose your perfect match

Features	A16	A50	A65	A150
Number of sewing stitches *	16	50	60	150
One-step buttonholes	3	5	6	10
Stitch selection	Jog dial	Electronic jog dial	Electronic jog dial	Key pad
LCD size	2,61 "	2,61 "	2,61 "	3,64 "
Error message	✓	✓	✓	✓
Handy central controls	✓	✓	✓	✓
Advanced needle threading	✓	✓	✓	✓
Lock stitch button	✓(without light)	✓	✓	✓
7 point feed dog	✓	✓	✓	✓
Quick set bobbin	✓	✓	✓	✓
LED sewing light	✓	✓	✓	✓
Free arm sewing	✓	✓	✓	✓
Drop feed setting	✓	✓	✓	✓
Bobbin winder	✓	✓	✓	✓
Needle stop position control up/down	✓	✓	✓	✓
Upper thread tension adjustment	✓	✓	✓	✓
Presser foot levelling button	✓	✓	✓	✓
Snap on presser feet system	✓	✓	✓	✓
Electronic slide speed control	✓	✓	✓	✓
Automatic reverse/reinforcement stitch	✓	✓	✓	✓
Accessory compartment	✓	✓	✓	✓
Case	Soft case	Soft case	Hard case	Hard case
Twin needle selection mode		✓	✓	✓
Built-in lettering styles				4
Automatic thread cutter			✓	✓
Speed control customised for zigzag width				✓
Combine stitches				✓
Mirror imaging				✓
Repeated/single sewing				✓
Weight	6.4 kg	6.5 kg	6.5 kg	6.5 kg

* including buttonhole styles

24/7 Support

At Brother we're always At your side and we're with you every step of your sewing journey. Our wide range of how-to movies and the handy Brother Support Centre App are only a click away, so download today and get started.

Learn more with the Brother Support Centre App:

- How to videos
- Operation manual
- Stitch pattern chart
- Needle and thread suggestions for different fabric types



Optional Accessories

Create even more with our range of add-on accessories and tools. Explore the full range and fire up your imagination at sewingcraft.brother.eu

Contact:



brother
at your side