

EXP-9000



- Size (Main body) W475mm x D186mm x H300mm
- Weight (Main body) 8.9kg

Standard

Wide extension table



Wider space makes sewing for large works easily such as curtains and quilts.

Foot controller



Easy start and stop operation with your foot.

Hard case



Hard case protects the machine from the dust.

Other features

Full automatic buttonhole	Just set the button on the buttonhole foot, the buttonhole is completed automatically.
Notification lamp	Ready when the red light turns green, you can start sewing pressing the button.
Lock presser foot	Keep presser foot horizontally with a simple button operation, easy to sew even thick material.
Auto tack button	Tack stitch function without puckering.
Smart accessory box	A convenient box store accessories inside the table.
Needle up-down button	The needle moves up and down by the button, convenient for square stitch and single stitch.
One-touch slow button	Slower the sewing speed instantly.
Drop feed	Lower the feed dog with a lever, moving the fabric freely, ideal for free motion quilting.
LED lighting for sewing space	Bright LED illuminates working space.
Free arm	Sew tubular items like sleeves, trousers, etc. Simply remove the detachable accessory box to access the free arm.
Thread sensor	If the upper thread breaks or is incorrectly threaded, the sensor will automatically stop the machine.
Embroidery unit	Embroidery unit is available as an option.

Option



Optional embroidery unit

EU-5

Connect optional embroidery unit to enhance your works



imagination to creation

EXP-9000

Manufactured by:

HappyJapan

HappyJapan Inc.

TOKYO OFFICE 2-9-5, Taito, Taito-ku, Tokyo, Japan

TEL: +81-3-3834-0711 FAX: +81-3-3835-8917

E-mail: sew-info@happyjpn.com

<https://www.happyjpn.com/en/product/sewing>



Distributed by:

GOVIC COMPANY d.o.o. | Franje Račkog 10 | 51000 Rijeka | Croatia

www.govic-company.hr

info@govic-company.hr

HappyJapan

Comfortable sewing and easy use with innovative features.

Happiest sewing life with EXP-9000.



Key features



Happy one step needle threader

Thread up to the guide and lower the lever, get the thread through the eye of the needle. An excellent feature operated with one hand action. (* For household sewing machine needles 11 to 16)



Quick change needle plate

Easy replacing the zigzag needle plate to straight needle plate.



LCD color touch screen

Simple and visible LCD color screen, easy and excellent operability by touch screen.



Wide sewing space

Sewing space is 200mm. Wide sewing space makes it easy to handle large fabrics.

Foot pressure adjustment



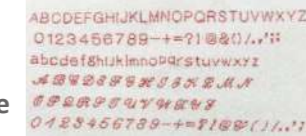
The pressure of the presser foot can be adjusted from 5 levels according to the thickness of the fabric.

Computerized automatic thread tension



Adjust appropriate thread tension according to the pattern.

Lettering stitch



Three alphabets, letter, and your favorite patterns can be combined.

Automatic thread cutter



Upper and bobbin thread are cut short automatically.

New threading system



Just thread in numerical order regardless of needle position.

Easy bobbin threading



Just insert bobbin and follow the guide, it allows you to start sewing without pulling up bobbin thread.

Easy bobbin winding



To set up the bobbin for winding, simply insert the bobbin to the shaft, wind the thread. The motor automatically stops when winding finish.

Lock button



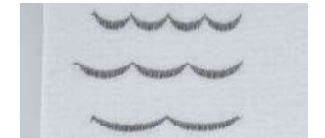
Safety function which locks the machine, replacing needle/foot safely and easily.

Knee lifter



Raise / lower the presser foot.

Elongator

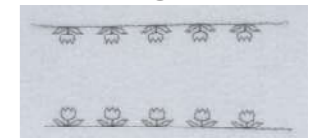


It allows to stretch length without changing the sewing density. (It depends on embroidery designs)

Silent design

Comfortable sewing without noise.

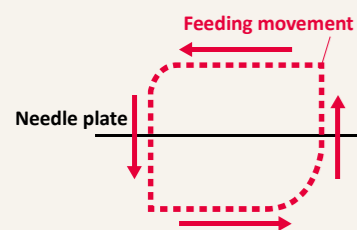
Mirror image



The pattern can be inverted. (It depends on embroidery designs)

New 3 New "FEEDING" features

1 HAPPY BOX FEED



Ideal sewing function for thick, thin and elastic fabrics.

By horizontal movement of the feed dog, the feed dog contacts fabrics longer time than current models, feeding thin or stretchable fabrics smoothly.

2 ZIGZAG FOOT (standard foot)



Eliminate skipping stitches.

Newly Improved zigzag foot feeds the fabrics firmly. Wide movement of zigzag foot allows to sew thick fabrics without skipping stitch.

3 7 PIECE FEED DOG



Reducing puckering of thin fabric.

7 piece feed dog reduces slipping and puckering.

Stitch pattern List (Total 478 types)

1	2	3	4	5	6	19	20	21	22	23	24	37	38	39	40	41	42	55	56	57	58	59	60																																																																																																	
7	8	9	10	11	12	25	26	27	28	29	30	43	44	45	46	47	48	61	62	63	64	1	2	3	4	5	16	17	18	19	20	31	32	33	34	35	46	47	48	49	50	61	62	63	64	65	76	77	78	79	80	91	92	93	94	95	106	107	108																																																													
13	14	15	16	17	18	31	32	33	34	35	36	49	50	51	52	53	54	11	12	13	14	15	26	27	28	29	30	41	42	43	44	45	56	57	58	59	60	71	72	73	74	75	86	87	88	89	90	101	102	103	104	105	ABC	A	Aa	0	1	2	3	4	ABCDE	abcde	5	6	7	8	9	FGHIJ	fg hij	+	=	?	!	KLMNO	klmno	-	@	&	()	/	PQRST	pqrst	.	,	'	;	:	UVWXY	uvwxy	z	à	á	â	æ	ZAAAÆ	z à á â æ	ç	è	é	ñ	ö	ÇEÈÑÖ	ç è é ñ ö	ø	ü	ÿ	—	ø	ü	ÿ	Ø	Ü	ÿ	—	ø	ü	ÿ	x2	x5