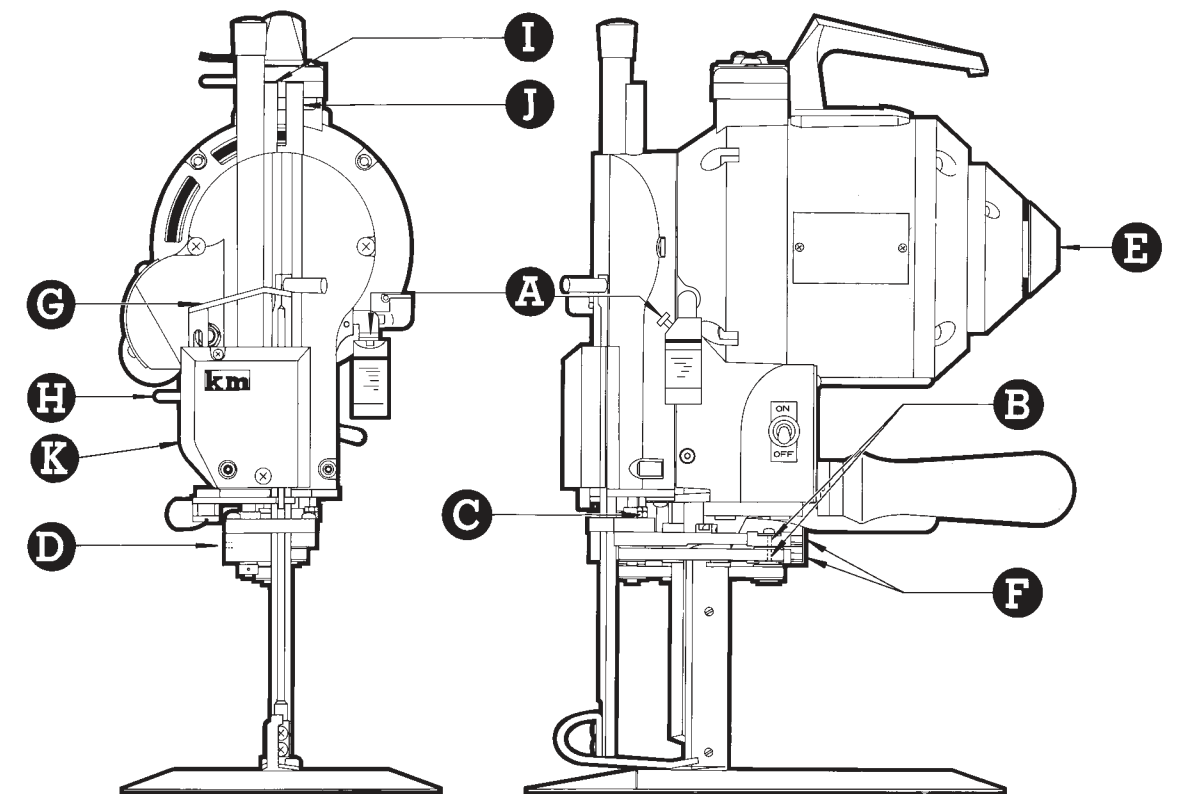


MODEL
KM-JNR
INSTRUCTION
BOOK AND
PARTS LIST

OPERATION-LUBRICATION-CARE
KM-JNR CUTTER



KM-JNR

KM-JNR instructions

- START ON
- 1. Fill oil cup A, be sure oil goes into smooth, if not, remove obstruction.
 - 2. Push in E and turn the machine by hand for a few revolutions to make sure the oil is spread over contact surfaces.
 - 3. The sharpener must be always up in locked position when starting.

- BE CAREFUL
- a. Keep the machine in warm place in cold weather.
 - b. Repeat short on & off before permitting the machine to run continuously for preventing excessive friction between contact surfaces.
Do not use too much oil. Do not use sewing machine oil. Use KM oil or a least good grade of No. 30 motor oil.
 - c. In case your cutter is of DUAL SPEED TYPE, please take care of the following two points:
 - d. (1) Be sure to select the switch to the upper high speed (HI) in starting, and then, when full revolution has been attained, to the lower speed (LO). The switch is put off by selecting the intermediate OFF.
(2) The continuous operation at low speed (LO) should be no more than 30 minutes. DO NOT OPERATE FOR MORE THAN 30 MINUTES.

LUBRICATION

EVERY 2 HOURS DAILY	ONCE A WEEK	ONCE A MONTH
1. Fill oil tank A (no need to oil at connecting rod bearing)	One drop oil to: 1. Tubes- I & J 2. Turn Knob-E 3. Pulley Shaft-C 4. Belt Pulleys-B	Remove D plug and insert KM grease tube. Give a pea-size amount to the opening.

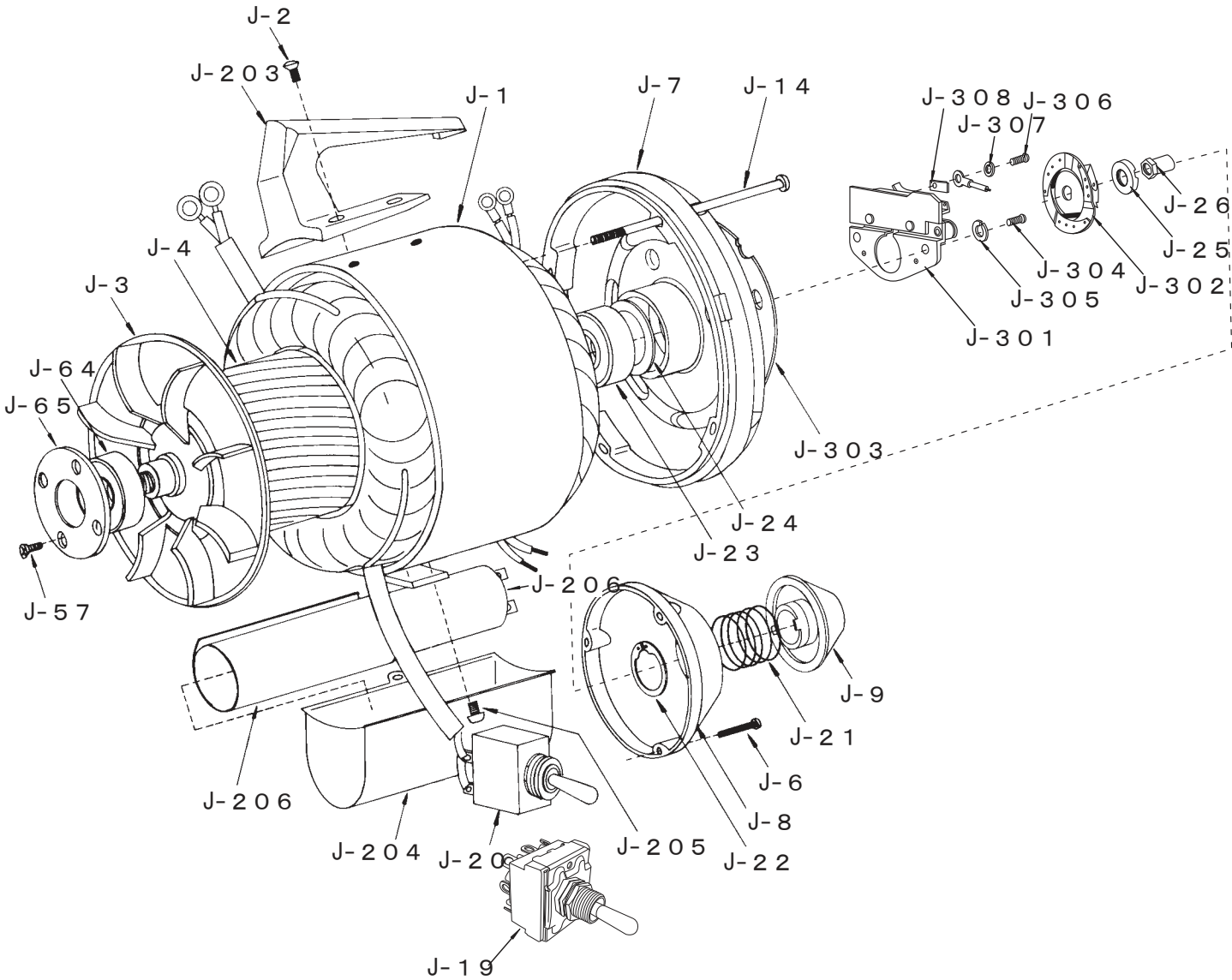
SHAPENER OPERATION

- 1. Put the machine away from piles of material.
- 2. Turn the power on. Drop pressure foot by lever located next to operating handle
- 3. Press lever G downward firm but not too quick.

- BE CAREFUL
- a. Do not operate sharpener without knife in machine.
 - b. Do not operate sharpener with cutting material laid in machine.
 - c. Do not shut off motor while sharpener is in motion.
 - d. If lever G is locked in halfway by too quick operation,' lift lever H to unlock and start again.

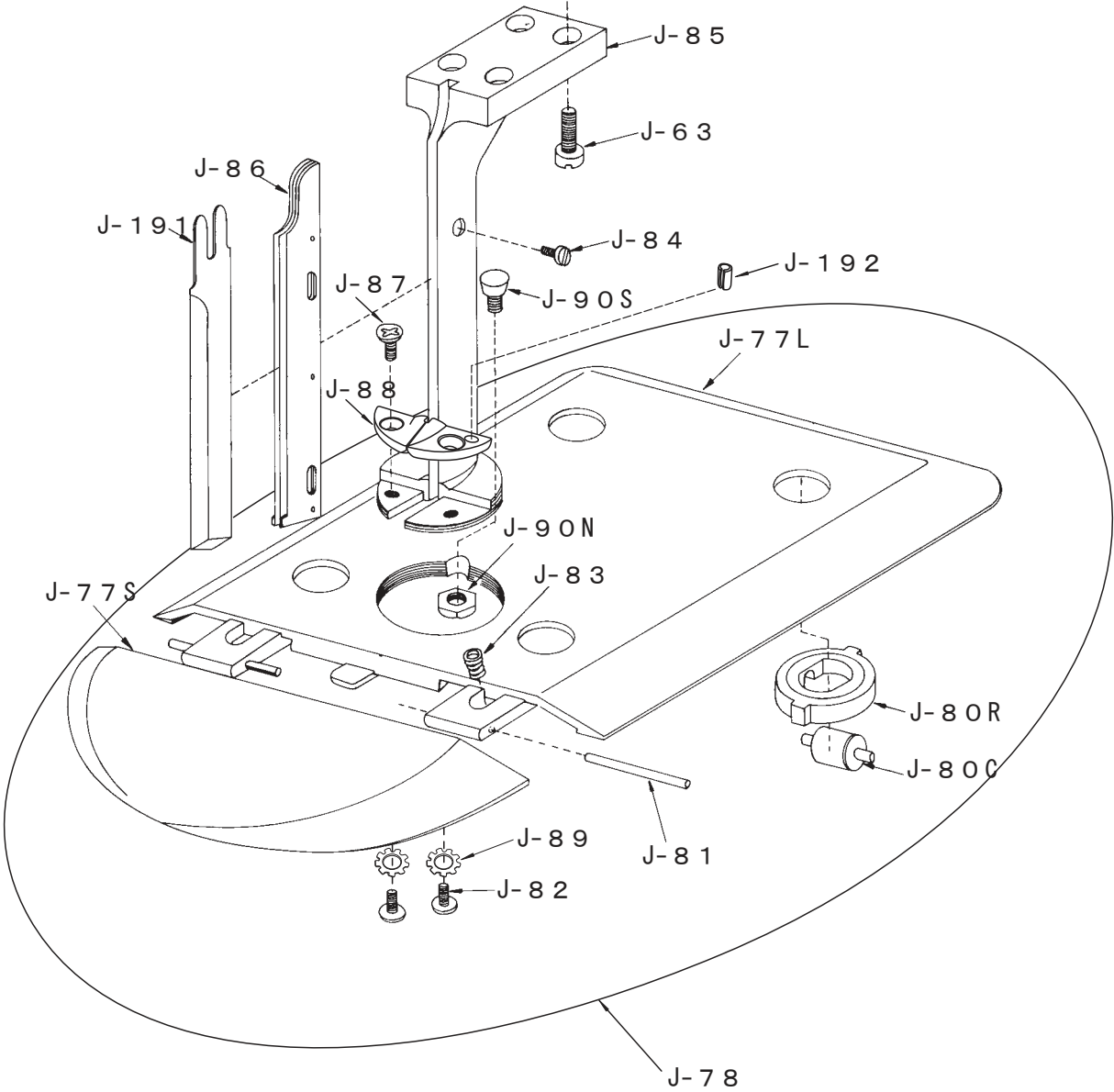
- CARE
- 1. Blow lint out of motor and sharpener by blower or something alike twice a week.
 - 2. Lint around screw mechanism of sharpener inside cover K must be cleaned once a week.
 - 3. Clean the knife slide once a day.
 - 4. Remove lint from rollers in base plate. To prevent undue accumulation of lint, do not oil plate rollers. If rollers stick, remove from plate and wash in cleaning solvent.

MOTOR & HOUSING MECHANISM



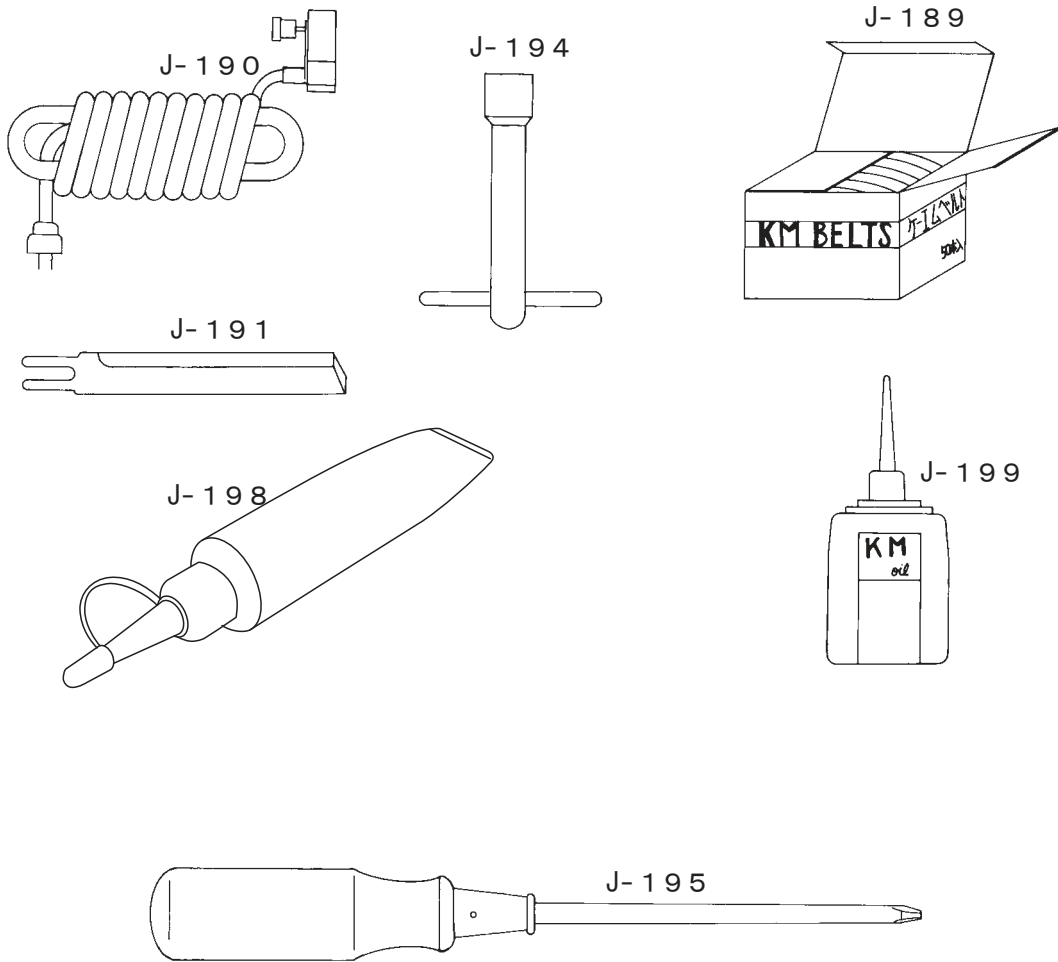
J-13	Front to Rear Bearing Nut		
J-27	Crank		
J-28	Crank Ball Bearing		
J-29	Crank Ball Bearing Lock Nut		
J-30	Screw for Brg Shaft		
J-31	Shaft for Ball Bearing		
J-32	Oil Pad Holder		
J-33	Oil Felt		
J-34	Oil Tank		
J-34C	Set Oil Tank		
J-35	Oil Tank Cap		
J-36	Connecting Rod		
J-37	Shakeproof Washer		
J-38	Connecting Rod Clamp Screw		
J-39	Wrist Pin		
J-40	Wrist Pin Plug		
J-41	Knife Lock Washer		
J-42	Nuts for Guide Screw		
J-43	Guide Washer		
J-44	Connecting Rod Washer		
J-45	Guide Adjusting Screw		
J-46	Guide Adjusting Nut		
J-47	Guide Lock Screw		
J-48	R.H.Guide		
J-49	L.H.Guide		
J-50	Cross Head		
J-51	Knife Lock Bolt		
J-52	Terminal Block Screw		
J-53	Ground Clip Screw		
J-54	Set Screw		
J-55	Front Bearing Housing		
J-58	Oil Pad Holder Screw		
J-59	Guide Hold Down Screw		
J-61L	Stud Lower L.H.Mountaing(L)		
J-61R	Stud Lower L.H.Mountaing(R)		
J-66	Ground Clip		
J-67	Attachment Plug Complete(3P)		
J-68	Terminal Block Complete(3P)		
J-69	Attachment Plug(Complete)		
J-70	Terminal Block(Complete)		
J-71	Terminal Sleeve		
J-72	Terminal Contact with Pin		
J-73	Operating Handle		
J-75	Switch Cover Screw		
J-76	Switch Cover		
J-208	Oil Tank Pile		
J-209	Vinyl Tube		

STANDARD & BASE PLATES



J-102	Collar for Lower Screw Shaft		
J-103	Thrust Ball Bearing		
J-104	Nut for Screw Shaft L.H.& R.H.		
J-105	Washer for Screw Shaft L.H.		
J-106	Screw Shaft With Extension		
J-107	Spacer Tube		
J-108	Stop Nut for Screw Shaft		
J-135	Right Hand Follower Nut		
J-136	R.H.Square Shaft		
J-137	Left Hand Follower Nut		
J-138	L.H.Square Shaft		
J-138W	L.H.Square Shaft Washer		
J-158	Screw for Gear Cover		
J-160	Grease Plug		
J-161	Screw for Stabilizer		
J-162	Lower Gear Bracket		
J-163	Screw for Slide Pulley		
J-164	Lower Gear Bracket Gear Cover		
J-165N	Adjusting Nut		
J-165S	Adjusting Screw		
J-166	Gear on Screw Shaft		
J-167	Intermediate Gear		
J-168	Bushing for shoe		
J-169	R.H.Shoe		
J-170	L.H.Shoe		
J-171	Set Screw for Sharpener Shoe		
J-172	Stabilizer		
J-173	Guide Back of Standard		
J-175	Screw for Guide Back		
J-176	L.H.Slide with Pulley		
J-177	R.H.Slide with Pulley		
J-178	Neoprene Band		
J-179	Front Pulley for Belts		
J-180	Roll Pin for Pulley		
J-181	Spring for Pulley Slide		
J-182	Screw for Clamping Arm		
J-183	Clamping Arm for Shoe		
J-184	Nut for Sharpener Shoe Screw		
J-185	Screw for Sharpener Shoe		
J-186	R.H.Sharpener Shoe Spring		
J-187	L.H.Sharpener Shoe Spring		
J-188	Spring for Arm		
J-189	Abrasive Belts		

ACCESSORY



J-189	Abrasive Belts		
J-190	Electric Corde Complete		
J-191	Knife		
J-194	Knife Bolt Wrench		
J-195	Screw Driver		
J-198	Bearing Grease		
J-199	Oiler		

